

# NaveniFlex™ Cell

BRINGING PRECISION TO SPATIAL PROTEOMICS

***In situ* detection of protein-protein interaction, post-translational modification and protein expression**

We know that diverse sample types demand tailored solutions. To maximize the value of your samples, we have optimized our flexible offering, aligning it closely with your needs. NaveniFlex™ Cell is based on our Naveni® proximity ligation technology and is developed for *in situ* cell samples.

**NaveniFlex Cell enables you to:**

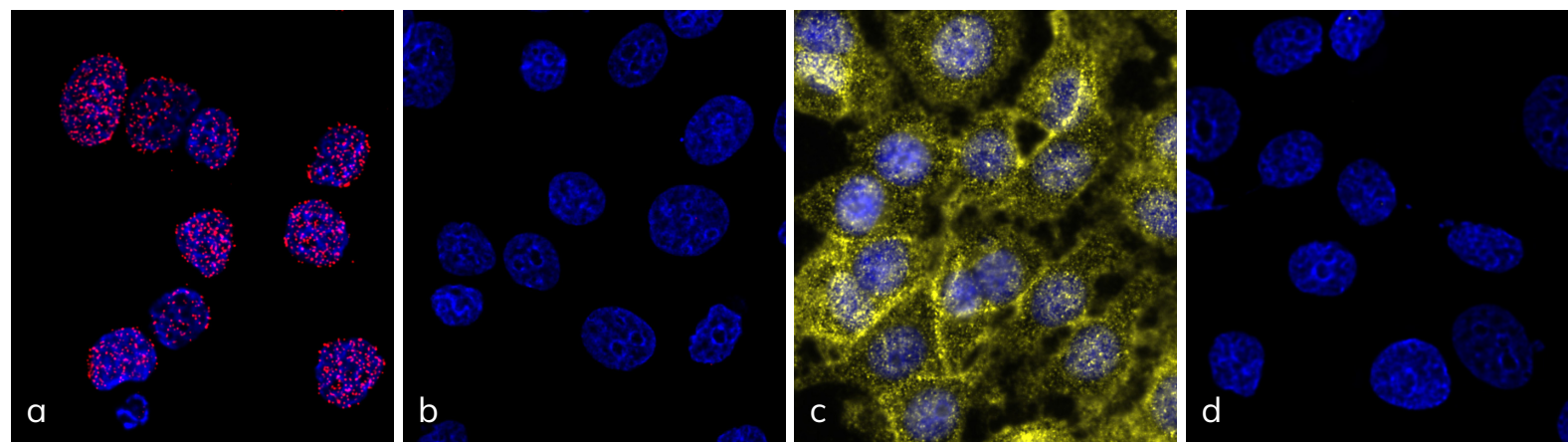
- Study protein-protein interactions and post-translational modifications in cell samples
- Precisely analyze even the least abundant protein targets
- Obtain easily quantifiable data
- Perform high throughput screening with our 96 well plate protocol

**Compatible with established *in situ* workflows**

NaveniFlex Cell serves as a secondary detection system that seamlessly integrates with your existing *in situ* workflows. It eliminates the need for specialized instrumentation, making the process hassle-free. Moreover, digital quantification provides easily comparable data.

FOR MORE INFORMATION OR TO PLACE AN ORDER, VISIT [WWW.NAVINCI.SE/PRODUCTS](http://WWW.NAVINCI.SE/PRODUCTS)  
Email: [contact@navinci.se](mailto:contact@navinci.se)





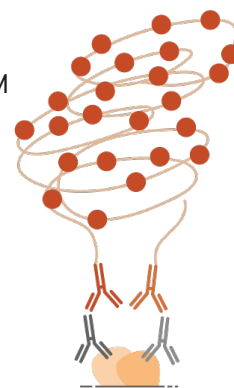
Detection of protein-protein interactions in MCF7 cells using NaveniFlex Cell MR. a) Shows Histone / Lamin interaction using detection with Red and b) shows the technical control. c) Shows E-Cadherin / B-catenin interaction using detection with Atto647, and d) shows its technical control.

The NaveniFlex Cell kit includes two Navenibodies conjugated to proprietary oligo arms (depicted as orange antibodies in the illustration to the right). Only when the Navenibodies are in close proximity will they generate a rolling circle amplification reaction, resulting in a strong and distinct dot that is easily quantifiable.

Choose from six assay versions based on the primary IgG host species, mouse-rabbit, goat-rabbit and goat-mouse, and your preferred detection reagents from the fluorophore alternatives TEX615 and Atto647N. If you need other primary antibody combinations, we recommend NaveniLink, a kit for conjugating your own primary antibodies.

NaveniFlex Cell is validated on FFPE and fresh formaldehyde-fixated cells (MCF7 and BT474), and recommended for FFPE and fresh formaldehyde-fixated cells. For tissue samples, we recommend using our NaveniFlex Tissue kit.

**NaveniFlex Cell MR, GR or GM**  
Detect proximity between mouse-rabbit, goat-rabbit, or goat-mouse primary antibody pairs.



## Ordering information

Product	Code	Read out	Primary antibodies required
NaveniFlex Cell MR Red/Atto647N	NC.MR.100 Red/Atto647N	Fluorescence	Mouse & Rabbit
NaveniFlex Cell GR Red/Atto647N	NC.GR.100 Red/Atto647N	Fluorescence	Goat & Rabbit
NaveniFlex Cell GM Red/Atto647N	NC.GM.100 Red/Atto647N	Fluorescence	Goat & Mouse
Naveni Control Kit	NF.CK.MR		Primary abs included
NaveniFlex Tissue MR Red/Atto647N	NT.MR.100 Red/Atto647N	Fluorescence	Mouse & Rabbit
NaveniFlex Tissue GR Red/Atto647N	NT.GR.100 Red/Atto647N	Fluorescence	Goat & Rabbit
NaveniFlex Tissue GM Red/Atto647N	NT.GM.100 Red/Atto647N	Fluorescence	Goat & Mouse
Kit size: 4 ml working solution.			
NaveniLink	NL.050	For conjugation of primary antibodies (50 µg)	



FOR MORE INFORMATION OR TO PLACE AN ORDER, VISIT [WWW.NAVINCI.SE/PRODUCTS](http://WWW.NAVINCI.SE/PRODUCTS)  
Email: [contact@navinci.se](mailto:contact@navinci.se)