

NaveniBright™

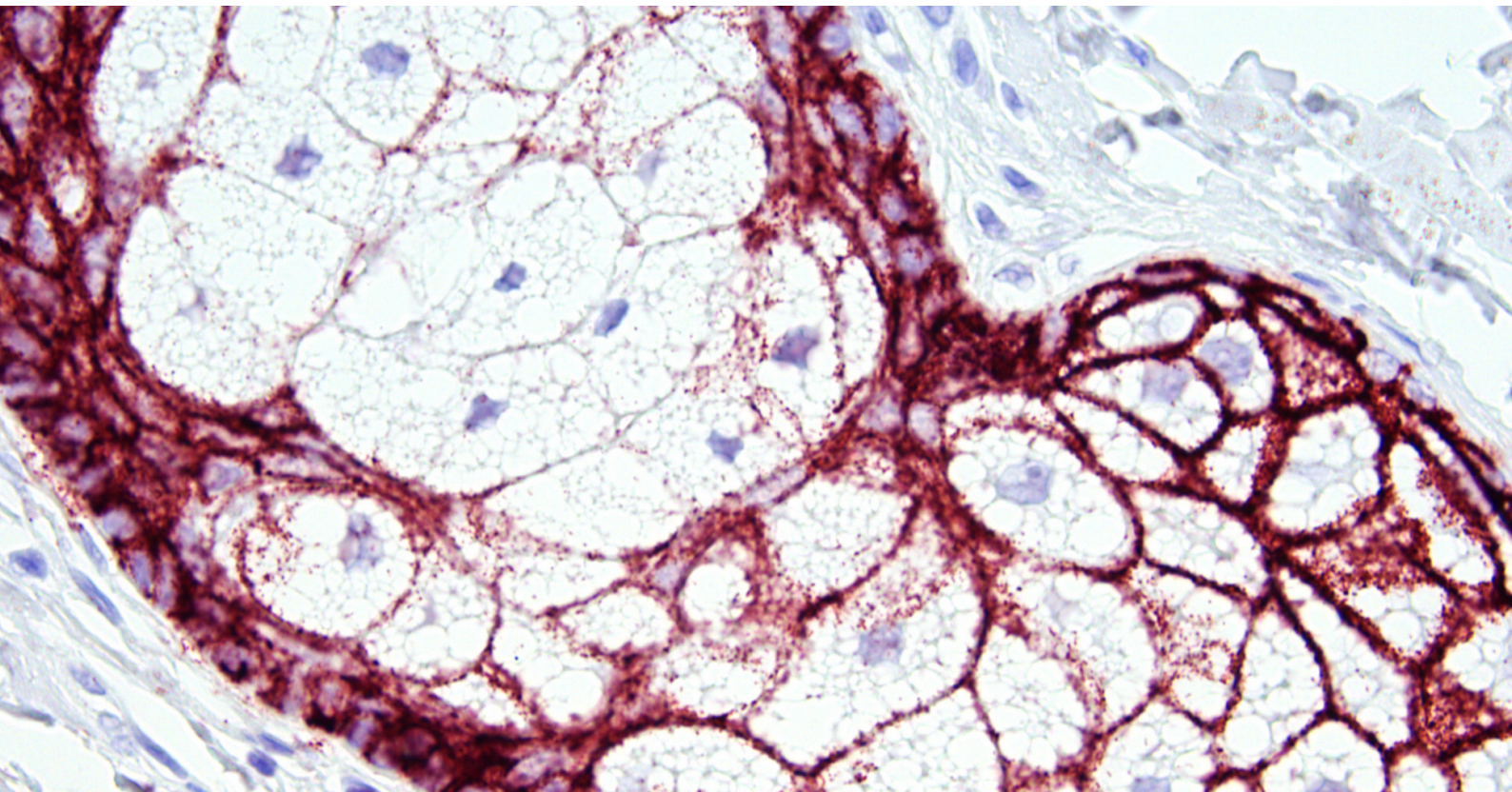
BRINGING PRECISION TO SPATIAL PROTEOMICS

In situ detection of protein-protein interactions and post-translational modifications

The NaveniBright is a new Naveni® product line with chromogenic readout. The *in situ* kits are based on our Naveni® Proximity Ligation Technology. The assay significantly enhances the chromogenic signal, providing you with stronger and more accurate staining of your cell or tissue samples.

NaveniBright™ enables you to:

- Detect protein-protein interactions
- Study post-translational modifications
- Identify single proteins with high specificity and sensitivity
- Visualize the protein target with intact cell/tissue morphology



Protein-interaction between E-cadherin and β -catenin in sebaceous gland.

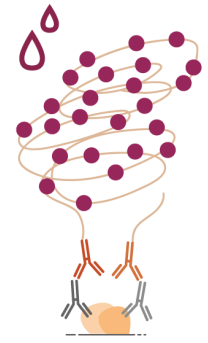
Compatible with established *in situ* workflows

NaveniBright is a secondary detection system to be used with your primary antibodies. The method does not require specialized instrumentation and is compatible with established *in situ* workflows.

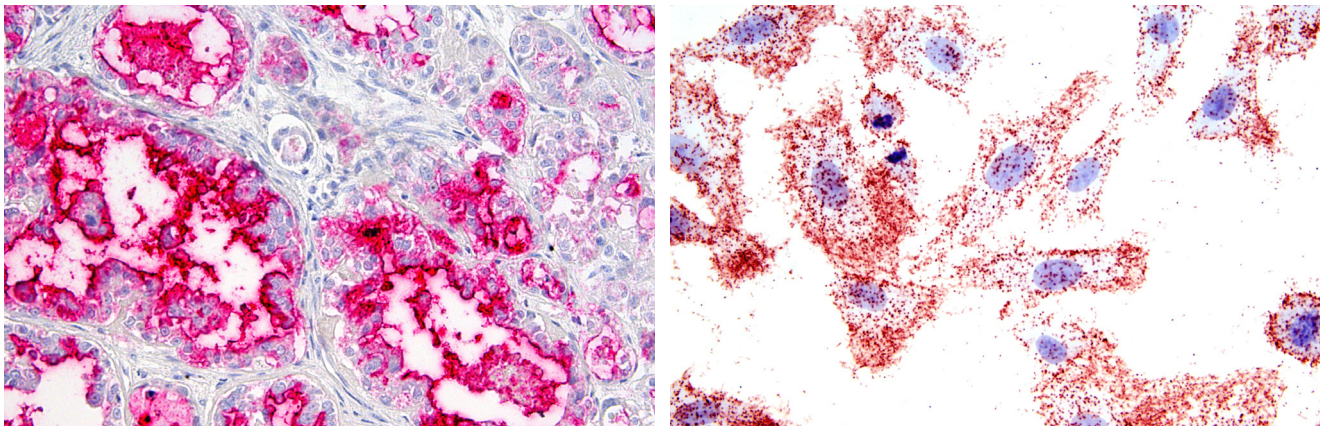
FOR MORE INFORMATION OR TO PLACE AN ORDER, VISIT WWW.NAVINCI.SE/PRODUCTS
Email: contact@navinci.se



The NaveniBright kit includes two Navenibodies conjugated to proprietary oligo arms (depicted as orange antibodies in the illustration to the right). Only if the Navenibodies are in close proximity will they generate a rolling circle amplification reaction, leading to a strong and distinct dot.



The kit is optimized for use with a mouse and rabbit primary antibody pair. Buffers and detection reagents are included; choose AP or HRP version according to your preferences. The kits have been tested in FFPE tissue and cell pellets, and formaldehyde /formalin-fixed cells.



Visualization of interaction between Mucin (MUC16) and Mesothelin in ovary tissue using NaveniBright AP (left) and Phosphorylated PDGFR-beta in stimulated Bj hTERT cells using NaveniBright HRP (right).

Ordering information

| NaveniBright | Code | Read out | Primary antibodies required |
|------------------|---------------|------------------------------|-----------------------------|
| NaveniBright AP | NB.MR.AP.100 | Brightfield and fluorescence | Mouse & Rabbit |
| NaveniBright HRP | NB.MR.HRP.100 | Fluorescence | Mouse & Rabbit |

| NaveniFlex Tissue | Code | Read out | Primary antibodies required |
|-----------------------------------|------------------------|--------------|-----------------------------|
| NaveniFlex Tissue MR Red/Atto647N | NT.MR.100 Red/Atto647N | Fluorescence | Mouse & Rabbit |
| NaveniFlex Tissue GR Red/Atto647N | NT.GR.100 Red/Atto647N | Fluorescence | Goat & Rabbit |
| NaveniFlex Tissue GM Red/Atto647N | NT.GM.100 Red/Atto647N | Fluorescence | Goat & Mouse |
| Naveni Control Kit | NF.CK.MR | | Primary abs included |

Kit size: 4 ml working solution



FOR MORE INFORMATION OR TO PLACE AN ORDER, VISIT WWW.NAVINCI.SE/PRODUCTS
Email: contact@navinci.se